



OFFICE MODULES & SUSPENDED LUMINAIRES

advanced systems

**STRATEGIC
LIGHTING
GROUP**
LIGHTING WITH PURPOSE

VIENNA
TECHNICAL SPECIFICATION DATA

Strategic Lighting Group | Strategic Lighting (Europe) Limited | Narrow Lane End Works, 64 Worple Road, Epsom, Surrey KT18 7AG | England UK
Tel. +44 (0)845 241 4631 | Fax. +44 (0)845 241 4632 | Email. info@strategiclighting.com | www.strategiclighting.com



VIENNA

fluorescent - dimmable



Energy Saving Technology



Green Energy Technology



Lamp Type Technology



Wattage - Unit
2 x 54W dimmable



Voltage
ac - alternating current only



Integral
HF Ballast



Lumens / Watt
value - based on 54W at 4450lms



CRI - Group Index
value - 80 - 90%.



IP Rating
Standard Interior Only



Insulation Class
- Functional Earth Required



Product Weight
Kilograms/unit



ENEC
compliance



CE
mark



F - mark
fire safe rating



Environmental
Technology

Product Purpose & Meaning

- Vienna is designed for office environments requiring modern micro-prismatics but with more elegance.
- The unusual 3-bladed tier construction provides an edge detail and a non-functional contemporary decor light blade.
- Vienna is named after the beautiful city in Austria. Both cultural and sophisticated - often refred to as "the city of dreams" due to its connections with Freud.

Product Summary

- Sandwich luminaire in 3 tier blade design.
- Direct/indirect with opal/techno-prismatic as middle sandwich
 - Available as office suspended or surface mounted module.
- Diffuser options in opal or high performance techno-prismatic diffuser [using Fluxidrive™ technology for c.30% more light efficiency].
- Ultra slim 69mm profile with designer 3 tier blades.
- Improved glare control and high output lighting.
- Dimmable with all signal protocols.
- Integral emergency versions - 3 hour maintained.

Applications

- Main & ancillary offices, meeting rooms and cellular office desking.
- Schools, libraries, conference suites.
- Ideal for showrooms and retail.

Performance

Lamp Type 28W - 80W 1200mm/1500mm T5 G5
Lamp Qty 2
Lamp Source Philips, Osram or GE.
Lumen Output refer to manufacturers data
Lamp CRI > 90
Life typically 20,000 - 25,000hrs
Optic Beams 90° [half peak]

Electrical Data

Voltage 230Vac mains
Load Watts Variable
Cable Terminal Yes
Gear Integrated
Configuration Mains Power
Dimming Yes
Data Protocol DALI, DSI digital or 0-10V analogue

Description

A slimline 3-bladed suspended/surface profile luminaire for performance direct lighting of working spaces, meeting rooms and office related spaces. Tiered-blades enable side light for improved visual lighting of vertical planes, with middle tier in technoprismatic or opal. Direct component in advanced techno-prismatic fluxidrive™ light controller diffuser at competitive market pricing. [Techno-prism Fluxidrive™ technology offers smooth light anti-glare control with volumised light appearance and high output ratios - c.30% more efficient than old type prismatics]. Alternative light controller in opal. Made for stylish fine-wire suspension or direct fixings.

Construction & Finishes

Pressed formed steel & aluminium housing and bezel
Standard finish in Aluminium RAL9006, custom options on request. Acrylic micro techno-prismatic or Opal diffuser.
Option in PC to Tpa >850°C]

Main Features

- Side light control for improved verticals.
- Fluxidrive™ techno-prismatic [Option in PC to Tpa >850°C]
 - 3 Tiered blade design.
- Fluxidrive™ superior optical controller.

Mounting

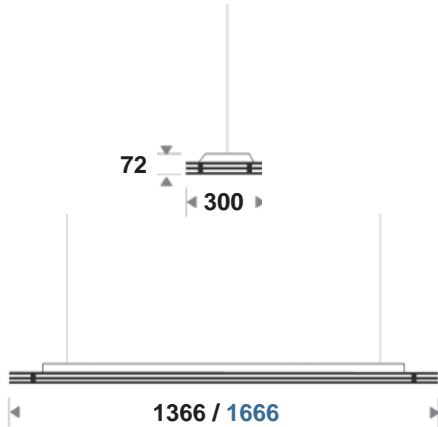
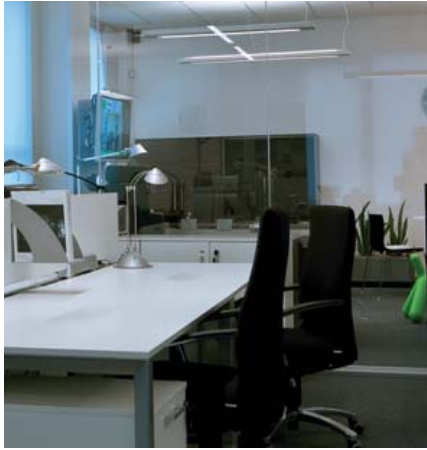
- Fine-wire suspension kit to 0.8 metres
c/w tool-free easy adjustability tension system.
c/w ceiling power outlet.
 - Integral gear
- **3 Core Connectors** Live & Neutral power feeds
- with functional Earth.

Connection Diagram A

- Connection is for standard mains 230V voltage with terminals at the ceiling mount plate.
- See Connection Diagram A - Page 324.

VIENNA

fluorescent - dimmable



Product Codes :

Direct & Indirect Suspended & Surface Mounted



Opal Diffuser				54W : LOR= 83.1% 100° x 102°
Suspended indirect/direct version in 3-tiered sandwich with opal diffuser as middle layer for light control. Opal diffuser is the default popular version due to low lamp visibility.				
VIE.I228.OP	W 300 x L 1366mm	2x28W T5 G5 - 5200lms	Opal Diffuser	
VIE.I254.OP	W 300 x L 1366mm	2x54W T5 G5 - 8900lms	Opal Diffuser	
VIE.I235.OP	W 300 x L 1666mm	2x35W T5 G5 - 5200lms	Opal Diffuser	
VIE.I280.OP	W 300 x L 1666mm	2x80W T5 G5 - 12300lms	Opal Diffuser	



Technoprismatic Fluxidrive™ Diffuser				54W : LOR= 89% 80° x 100°
Suspended indirect/direct version in 3-tiered sandwich with techno-prismatic diffuser as middle layer for light control. Techno-prismatic is the high output version.				
VIE.I228.TP	W 300 x L 1366mm	2x28W T5 G5 - 5200lms	Techo-Prismatic	
VIE.I254.TP	W 300 x L 1366mm	2x54W T5 G5 - 8900lms	Techno-Prismatic	
VIE.I235.TP	W 300 x L 1666mm	2x35W T5 G5 - 5200lms	Techo-Prismatic	
VIE.I280.TP	W 300 x L 1666mm	2x80W T5 G5 12300lms	Techo-Prismatic	

POST-FIX CODES

For codes with

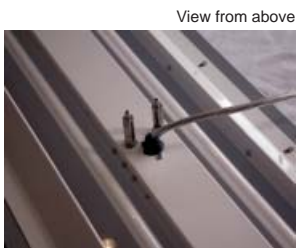
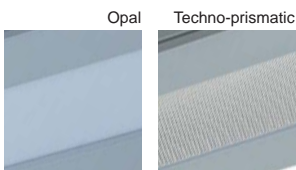
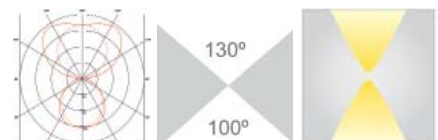
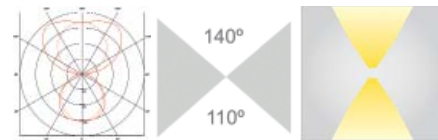
MOUNTING - Default supply is suspension type and kit for Surface arrangement add postfix - "-SUR".
DIMMING - HF gear defaults for HFR dimming by DALI ,DSI or 1-10V please add post-fix "-DALI", "-DSI" or "-1-10V" respectively.

TPa>850°C Prismatic - For use of high thermal prismatic please add post-fix "TPA".

EMERGENCY - integrated emergency is not possible - please use remote dedicated units.

SURFACE - For surface mounted version add substitute - alpha "-I" for "-S" after fist three letters "VIE".

important note: beam angles and lumen outputs are approximate and guide only
please refer to full photometric data, lamp manufacturers data or consult technical dept.



Lamps have clear top dust covers
- not apparent.

OFFICE MODULES SUSPENDED & SYSTEMS

product pages start page 27

office - retail - leisure

RECESSED MODULES

T5 - 2x54W Page 28



techno-micro-prismatics

T5 - 2x24W Page 28



OFFICIO series

T5 - 2x24W Page 28



OFFICIO series

Page 30



RETAIL STORE

LED - 65W Page 34



PERSCARA RX

T5 - 2x24W Page 32



GIOTTO XS series

T5- 2x24W Page 32



GIOTTO XS series

T5 - 2x24W Page 32



GIOTTO XS series

SUSPENDED SYSTEM

SYSTEM Page 57



XICATA 48 series - T5

SYSTEM Page 57/61



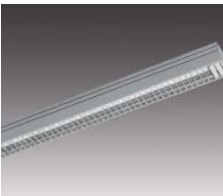
XICATA 48 - T5 & SPOTS

SYSTEM Page 61



XICATA 48 series - SPOTS

SYSTEM Page 65



XICATA 48 - SINGLE T5

SYSTEM Page 67



XICATA 48- ROTATOR 1

SYSTEM Page 71



XICATA 48 - WALL UNITS

SYSTEM Page 69



XICATA 48 - VIENNA

SYSTEM Page 69



XICATA 48 - TUBE

SYSTEM Page 69



XICATA 48 - LED SPOTS

SYSTEM Page 67



XICATA 48 - ROTATOR 2

Page 60



HAIR SALONS

Page 64



LIBRARY'S

Page 66



CAR DEALERSHIPS

Page 68



RETAIL

Page 63



SCHOOLS

Page 58



RECEPTIONS

OFFICE MODULES SUSPENDED & SYSTEMS

office - retail - leisure

product pages start page 27

SUSPENDED LUMINAIRES

Page 36 30x3W - LED



MONZA

Page 38 3x54W - T5



VERONA

Page 40 3x80W - T5



AILERON

Page 42 LED - 32x3W



CHIARO

Page 44 LED - 32x3W



LATLUCE

Page 46 2x54W - T5



MILANO series

Page 46 2x54W - T5



MILANO series

Page 48 2x24W - T5



VIENNA

Page 35 LED - 72W



PERSCARA XS

Page 103 LED - 20W/m



AMBIENTALE

Page 26



OFFICE'S

Page 46



OFFICE'S

Page 39



OFFICE'S

SURFACE

Page 48 2x80W - T5



VIENNA

Page 48



OFFICE'S

RECESSED SYSTEM

Page 50 SYSTEM



XICATA 77 RECESSED

Page 51 SYSTEM



XICATA 77 RECESSED

Page 54



OFFICE'S

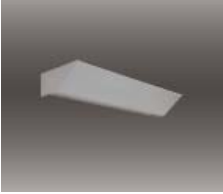
OFFICE WALL LUMINAIRES

Page 228 2x55W TC-1



ASYAERO

Page 229 1x55W TC-1



KEELIO



DEALER ROOMS