

INSTALLATION:

1. Electrical Connection



a. Cut at unit cut mark only



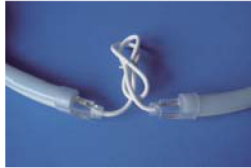
b. Cut out the rest Conductors



c. Plug into the Power Connector



d. Splice Connector



e. Complete Splice Connection



f. Sealed by glue and PVC tube End Cap

24V RGB LED NEON-FLEX SPECIFICATION

Model	Size(mm)	Input Voltage	LED Space	No. of LED per unit	Power per unit	Length per unit	Power per meter	Rope Color	LED Color
LED-RGB-NF-24V	20X28	24VDC	0.5"/12.7mm	R6/G6/B6	1.44W	3"/0.0762m	18.6W	Milk White	RGB

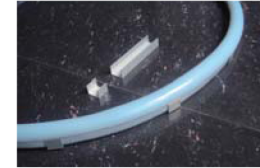
120V RGB LED NEON-FLEX SPECIFICATION

Model	Size(mm)	Input Voltage	LED Space	No. of LED per unit	Power per unit	Length per unit	Power per meter	Rope Color	LED Color
LED-RGB-NF-120V	20X28	120V~	0.5"/12.7mm	R36/G36/B36	7.2W	1.5FT/0.4572m	15.8W	Milk White	RGB

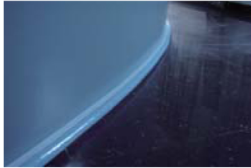
240V RGB LED NEON-FLEX SPECIFICATION

Model	Size(mm)	Input Voltage	LED Space	No. of LED per unit	Power per unit	Length per unit	Power per meter	Rope Color	LED Color
LED-RGB-NF-240V	20X28	240V~	0.5"/12.7mm	R72/G72/B72	14.4W	3.0FT/0.9144m	15.8W	Milk White	RGB

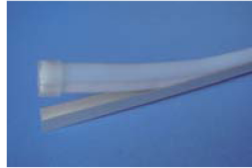
3. Fixed Method



a. Install by 2cm or 5cm mounting clip

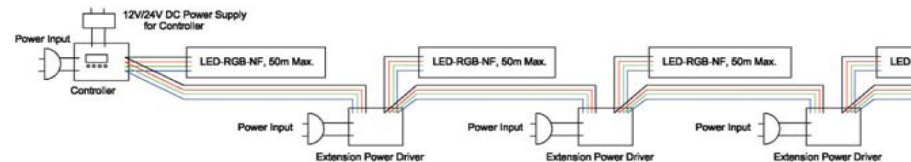


b. Install by Pre-cut slot

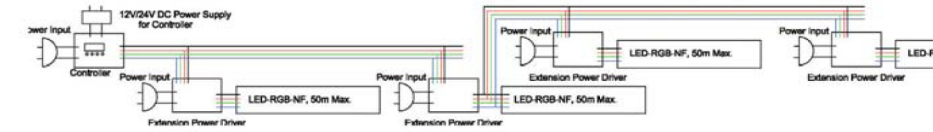


c. install by Aluminium or Plastic Channel

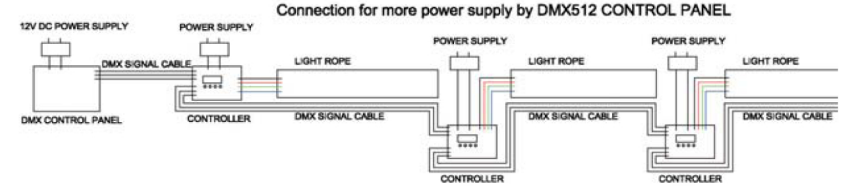
4. How to connected to Controller and Power Extension Driver (1)



5. How to connect to Extension Power Driver (2)



6. How to connect to DMX512 Control Panel



Guide for RGB Type, Chasing Type and BI-COLOR Type

Guide for RGB Type (20X28mm)

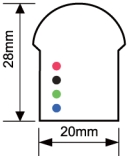
- LED-RGB-NF-240V-----Translucent Jacket, Volt. 240V, R/G/B LED;
- LED-RGB-CNF-240V-----Crystal Jacket, Volt. 240V, R/G/B LED.

Guide for Chasing Type (20X28mm)

- LED-C-NF-240V-R/G/B-----Translucent Jacket, Volt. 240V, R/G/B LED.

Guide for BI-COLOR Type (20X28mm)

- LED-BI-NF-240V-R/G-----Translucent Jacket, Volt. 240V, R/G LED;
- LED-BI-CNF-240V-B/Y-----Crystal Jacket, Volt. 240V, B/Y LED.



RGB Type Cross-Section

RGB-LED NEON-FLEX Accessories:

- LED-RGB-NF-PC-2FT/6FT-----2FT/6FT PVC Cable, one end with Power Connector, another one end with male Connector to controller
- LED-RGB-NF-EXT-C-2FT/6FT-----Extension Connector with 2FT/6FT PVC Cable and Power Connector
- LED-RGB-NF-EXT-PC-2FT/6FT-----Extension Connector with 2FT/6FT PVC Cable and Controller Connector
- LED-RGB-NF-FC-----Front Connector
- LED-RGB-NF-SC-----Splice Connector
- LED-RGB-NF-EC-----End Cap
- LED-RGB-NF-PT-----Heat-Shrinkable PVC Tube
- LED-RGB-NF-CH-AL-----Aluminum Channel
- LED-RGB-NF-CH-P-----Plastic Channel
- LED-RGB-NF-CL-----Mounting Clip
- PVC-GLUE-----PVC Glue

CAUTION!

- Do not plug it into power source when it is still wrapped in a roll or in a spool to avoid heating.
- Do not plug it into power source before installation is fully

- The lamps can not be replaced and can not repaired. To avoid fire and shock hazard, do not use when outer insulation is damaged.
- The power connection can not be replaced and can not repaired. If power cord is damaged, replace the same one from supplier.
- RGB LED NEON-FLEX can ONLY cut at the indicated mark.
- Do not cover RGB LED NEON-FLEX by any object or material when it is in use.
- The end of RGB LED NEON-FLEX must be fully insert into the End Cap and fixed tight.
- For outdoor use, add silicon glue on the connectors and end cap for waterproof. And, add additional PVC tube for sealed use.