



OFFICE MODULES & SUSPENDED LUMINAIRES

advanced systems

**STRATEGIC
LIGHTING
GROUP**
LIGHTING WITH PURPOSE



MILANO
TECHNICAL SPECIFICATION DATA

Strategic Lighting Group | Strategic Lighting (Europe) Limited | Narrow Lane End Works, 64 Worple Road, Epsom, Surrey KT18 7AG | England UK
Tel. +44 (0)845 241 4631 | Fax. +44 (0)845 241 4632 | Email. info@strategiclighting.com | www.strategiclighting.com

MILANO
fluorescent - dimmable

IP20



Product Purpose & Meaning

- Milano is designed for office environments requiring modern technoprismatics & louvres with simplicity & style.
- A 30mm ultra-thin edge blade profile provides architectural minimalism and one of the thinnest shallowest suspended modules on the professional lighting market.
- Milano [Mill-Larn-O] takes it's name from the city of style - Milan, in northern Italy.

Product Summary

- Combined direct & indirect office suspended luminaire with techno-prismatic diffuser [using Fluxidrive™ technology for c.30% more light efficiency].
- Ultra slim 30mm with minimal single blade profile.
- Choice of light controllers in either bladed louvre, satin frosted diffuser or techno-micro-prismatic panel.
- Indirect uplight only version with solid panel.
- Two sizes in recti-linear 1200x200mm or 655mm square .
- Dimmable with all signal protocols.
- Integral emergency versions - 3 hour maintained.

Applications

- Main & ancillary offices, meeting rooms and cellular office desking.
- Schools, libraries, conference suites.
- Ideal for showrooms and retail.

Performance

- Lamp Type 28W - 80W 1200mm/1500mm T5 G5
- Lamp Qty 2 [or 4 in 655mm square array]
- Lamp Source Philips, Osram or GE.
- Lumen Output refer to manufacturers data
- Lamp CRI > 90
- Life typically 20,000hrs
- Optic Beams 90° [half peak]

Electrical Data

- Voltage 230Vac mains
- Load Watts Variable
- Cable Terminal Yes
- Gear Integrated
- Configuration Mains Power
- Dimming Yes
- Data Protocol(s) DALI, DSI digital or 0-10V analogue

Description

An ultra-slim single blade suspended sheet luminaire for performance combined indirect/direct lighting of working spaces, meeting rooms and office related spaces. Direct light component in advanced techno-prismatic fluxidrive™ light controller diffuser at competitive market pricing. [Fluxidrive™ technology offers smooth light anti-glare control with volumised light appearance and high output ratios - c.30% more efficient than old type prismatics]. Alternative direct light controllers in bladed louvre or satin frosted. Satin Frosted and Technoprismatic version is with designer dropped acrylic panel. Indirect uplight only version.Made for modern fine-wire suspension.

Construction & Finishes

Pressed formed steel body and bezel
Standard finish in Aluminium RAL9006, custom options on request. Acrylic techno-prismatic [option in PC Tpa>850°C]

Main Features

- Minimalist ultra-slim 30mm profile.
- Fluxidrive™ teccno-prismatic [PC version to Tpa >850°C].
- Single sheet / blade design.
- Fluxidrive™ superior optical controller.

Mounting

- Fine-wire suspension kit to 0.8 metres c/w tool-free easy adjustability tension system.
- c/w ceiling power outlet.

- Integral gear

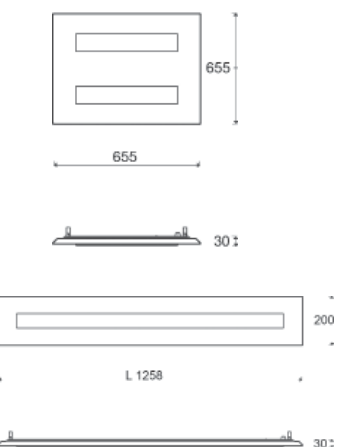
- 3 Core Connectors

Live & Neutral power feeds - with functional Earth.

Connection Diagram A

- Connection is for standard main voltage with terminals at the ceiling mount plate.
- See Connection Diagram A - Page 324.

MILANO
fluorescent - dimmable



Product Codes :

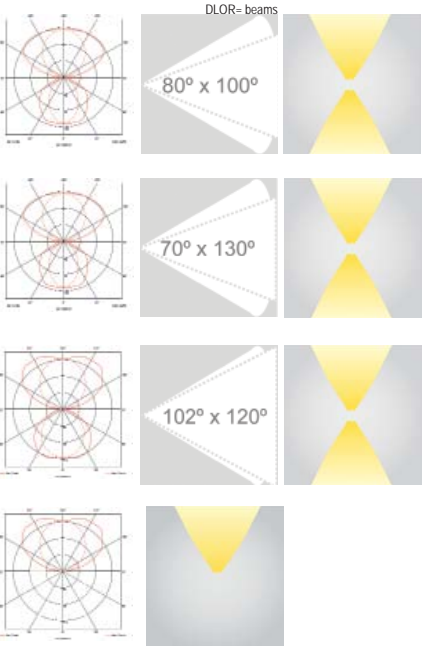
Milano

Milano is available in T5 lamps direct-indirect in 3 controllers. The Satin Frosted version proves most popular with the best low lamp visibility. The technoprismatic enables a higher light output and the bladed louvre premium glare control. An indirect only version exist for upward light only.

Technoprismatic Fluxidrive™ Diffuser				54W - LOR= 86%	DLOR=49%
MIL.228.TP	W 200 x L 1258mm	2x28W T5 G5 - 5200lms	Techno-Prismatic		
MIL.254.TP	W 200 x L 1258mm	2x54W T5 G5 - 8900lms	Techno-Prismatic		
MIL.414.TP	W 655 x L 655mm	4x14W T5 G5 - 4800lms	Techno-Prismatic		
MIL.424.TP	W 655x L 655mm	4x24W T5 G5 - 7000lms	Techno-Prismatic		
Parabolic Louvre Controller				54W - LOR= 69%	DLOR=38%
MIL.228.LO	W 200 x L 1258mm	2x28W T5 G5 - 5200lms	Louvre Controller		
MIL.254.LO	W 200 x L 1258mm	2x54W T5 G5 - 8900lms	Louvre Controller		
MIL.414.LO	W 655 x L 655mm	4x14W T5 G5 - 4800lms	Louvre Controller		
MIL.424.LO	W 655 x L 655mm	4x24W T5 G5 - 7000lms	Louvre Controller		
Satin Frosted Diffuser				54W - LOR= 79%	DLOR=43%
MIL.228.SF	W 200 x L 1258mm	2x28W T5 G5 - 5200lms	Satin Frosted Diffuser		
MIL.254.SF	W 200 x L 1258mm	2x54W T5 G5 - 8900lms	Satin Frosted Diffuser		
MIL.414.SF	W 655 x L 655mm	4x14W T5 G5 - 4800lms	Satin Frosted Diffuser		
MIL.424.SF	W 655 x L 655mm	4x24W T5 G5 - 7000lms	Satin Frosted Diffuser		
Indirect Uplight Only				54W - LOR= 60%	ULOR=100%
MIL.228.UP	W 200 x L 1258mm	2x28W T5 G5 - 5200lms	Indirect Uplight Only		
MIL.254.UP	W 200 x L 1258mm	2x54W T5 G5 - 8900lms	Indirect Uplight Only		
MIL.414.UP	W 655 x L 655mm	4x14W T5 G5 - 4800lms	Indirect Uplight Only		
MIL.424.UP	W 655 x L 655mm	4x24W T5 G5 - 7000lms	Indirect Uplight Only		

POST-FIX CODES

For codes with
DIMMING - HF gear defaults for HFR dimming by DALI ,DSI or 1-10V please add post-fix "-DALI", "-DSI" or "-1-10V" respectively.
EMERGENCY - integrated emergency is not possible - please use remote dedicated units.
TPa>850°C Prismatic - For use of high thermal prismatic please add post-fix "TPA".



View from above -
Lamps have clear top dust covers
- not apparent



Frosted satin diffuser



OFFICE MODULES SUSPENDED & SYSTEMS

product pages start page 27

office - retail - leisure

RECESSED MODULES

T5 - 2x54W Page 28



techno-micro-prismatics

T5 - 2x24W Page 28



OFFICIO series

T5 - 2x24W Page 28



OFFICIO series

Page 30



RETAIL STORE

LED - 65W Page 34



PERSCARA RX

T5 - 2x24W Page 32



GIOTTO XS series

T5- 2x24W Page 32



GIOTTO XS series

T5 - 2x24W Page 32



GIOTTO XS series

SUSPENDED SYSTEM

SYSTEM Page 57



XICATA 48 series - T5

SYSTEM Page 57/61



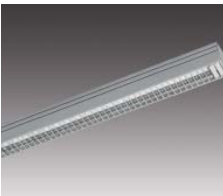
XICATA 48 - T5 & SPOTS

SYSTEM Page 61



XICATA 48 series - SPOTS

SYSTEM Page 65



XICATA 48 - SINGLE T5

SYSTEM Page 67



XICATA 48- ROTATOR 1

SYSTEM Page 71



XICATA 48 - WALL UNITS

SYSTEM Page 69



XICATA 48 - VIENNA

SYSTEM Page 69



XICATA 48 - TUBE

SYSTEM Page 69



XICATA 48 - LED SPOTS

SYSTEM Page 67



XICATA 48 - ROTATOR 2

Page 60



HAIR SALONS

Page 64



LIBRARY'S

Page 66



CAR DEALERSHIPS

Page 68



RETAIL

Page 63



SCHOOLS

Page 58



RECEPTIONS

OFFICE MODULES SUSPENDED & SYSTEMS

office - retail - leisure

product pages start page 27

SUSPENDED LUMINAIRES

Page 36 30x3W - LED



MONZA

Page 38 3x54W - T5



VERONA

Page 40 3x80W - T5



AILERON

Page 42 LED - 32x3W



CHIARO

Page 44 LED - 32x3W



LATLUCE

Page 46 2x54W - T5



MILANO series

Page 46 2x54W - T5



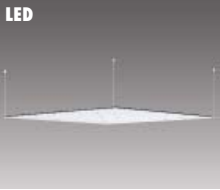
MILANO series

Page 48 2x24W - T5



VIENNA

Page 35 LED - 72W



PERSCARA XS

Page 103 LED - 20W/m



AMBIENTALE

SURFACE

Page 48 2x80W - T5



VIENNA

Page 48



OFFICE'S

RECESSED SYSTEM

Page 50 SYSTEM



XICATA 77 RECESSED

Page 51 SYSTEM



XICATA 77 RECESSED

Page 54



OFFICE'S

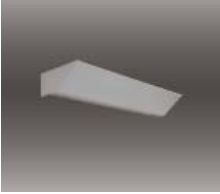
OFFICE WALL LUMINAIRES

Page 228 2x55W TC-L



ASYAERO

Page 229 1x55W TC-L



KEELIO



DEALER ROOMS